

# coffee & climate highlights

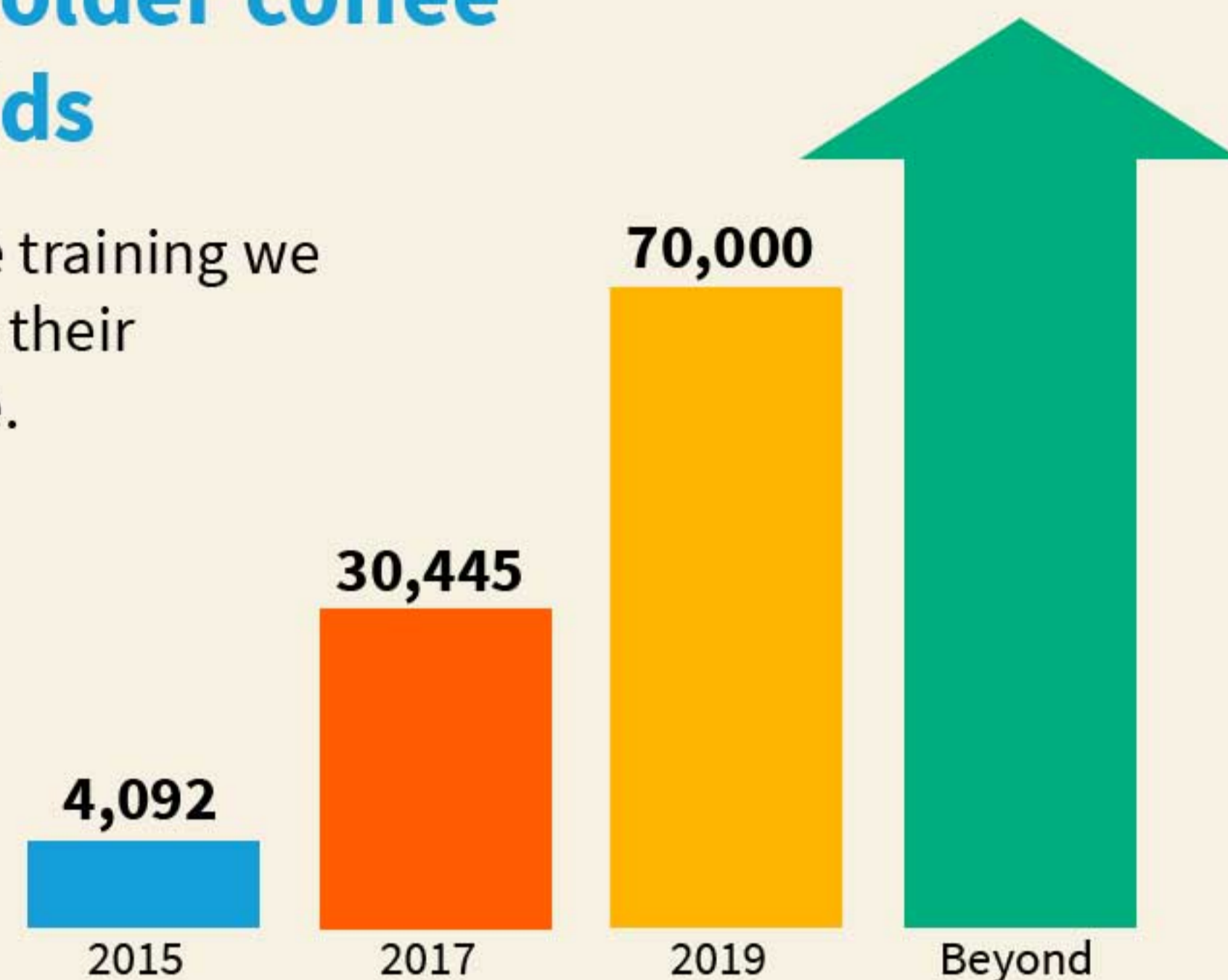
Since 2010, the initiative for coffee&climate implements its vision to enable coffee farmers worldwide to adapt to climate change. With current commitments of coffee companies and public partners at least 70,000 coffee farming families will benefit from c&c activities until 2019. We work in the field together with smallholder coffee farmers and local partners, and in a precompetitive way.

coffee&climate means collective impact – We need to get scale and be fast!

## key facts - December 2017

### number of smallholder coffee farming households

Through our coffee&climate training we support farmers to increase their resilience to climate change.



### community adaptation plans

c&c supported 10 coffee community adaptation plans which were facilitated and are being implemented. Topics include e.g. zero tolerance for wild fire and deforestation, water source protection and natural resource management.



### strengthening national and local institutions and implementers

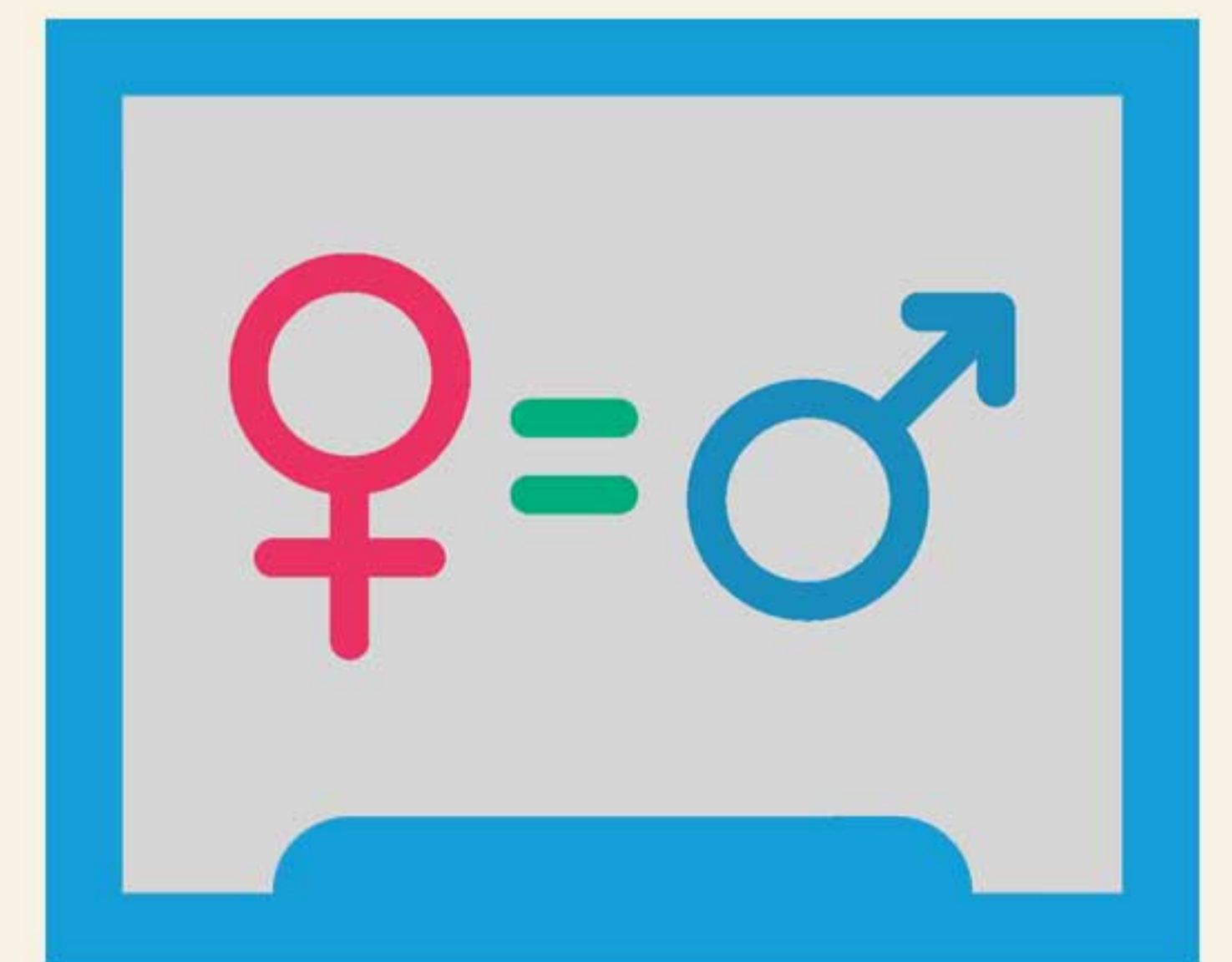
Through a “Training Of Trainer” format, we qualify third parties to implement c&c practices. 17 ‘Memorandums of Understanding’ have been signed to further roll out c&c training. In Brazil, a Community of Practice has been established to foster implementation, innovation and joint learning locally.

**405** local trainers



### gender equality

Women form the backbone of the world’s coffee production. We include gender equality in our training and promote climate smart practices which go beyond the farm level and address households and communities helping to mitigate climate change as well as reducing a gender gap and impact on the environment.



### coffee&climate toolbox

As a central knowledge hub, the coffee&climate toolbox compiles field guidelines, training manuals and 25 different adaptation and mitigation practices which have been promoted or validated on trial plots together with farmers. Lessons learned are consolidated and shared with the coffee sector online via: <http://toolbox.coffeeandclimate.org>



### supporting enabling policy framework

The c&c teams contribute to coffee NAMA development processes in Vietnam, Honduras and Guatemala. Additionally, c&c experiences have been integrated in the National Sustainability Curricula (NSC) in Brazil, Vietnam and Tanzania.

**contribution to coffee NAMAs & NSCs**



Join the network now to reach more coffee farmers: [info@coffeeandclimate.org](mailto:info@coffeeandclimate.org) or visit [www.coffeeandclimate.org](http://www.coffeeandclimate.org)

### current members:

Löfbergs  
Paulig  
Tchibo  
Joh. Johansson  
Franck  
Neumann Gruppe

Lavazza Foundation  
Sida  
GIZ  
Tim Hortons  
Starbucks

### implementation partners:

Hanns R. Neumann Stiftung  
Conservation International

**coffee & climate**  
enabling effective response